

**DAVID
KORDANSKY
GALLERY**

Doyle Lane: Weed Pots
Curated by Ricky Swallow
June 23 – August 4, 2023

Ephemera Case (left to right):



Non-Art

Studio Potter: Volume 9, 1981
academic journal
10 x 8 1/2 x 1/4 inches
(25.4 x 21.6 x 0.6 cm)
(N 22.122)



Doyle Lane

Arts Objects USA Catalog, 1972
catalog
6 x 4 1/4 inches
(15.2 x 10.8 cm)
(DLE 22.051)



Doyle Lane

Ceramic Tile Ephemera, 1968 - 1978
three ceramic tiles / paperweights
various dimensions
(DLE 22.053)



Doyle Lane

Bead Keychains, 1980-2000
glazed ceramic, metal keyring, and sample
keys
various dimensions
(DLE 22.079)

DAVID KORDANSKY GALLERY



Doyle Lane

Hillside Gallery Brochure, mid-1960s

brochure

9 x 12 inches

(22.9 x 30.5 cm)

(DLE 22.062)



Non-Art

Doyle Lane Business Card, 1970

laminated business card

4 1/4 x 2 5/8 inches

(10.8 x 6.7 cm)

(N 22.123)



Non-Art

Black Artists on Art: Volume 2, 1997

book

10 1/2 x 7 1/2 x 3/4 inches

(26.7 x 19.1 x 1.9 cm)

(N 22.121)



Non-Art

California Black Craftsman, 1970

exhibition catalog

8 1/2 x 5 1/2 x 1/8 inches

(21.6 x 14 x 0.3 cm)

(N 22.119)



Non-Art

Ebony Magazine, November, 1958

magazine

13 3/8 x 10 3/8 x 1/4 inches

(34 x 26.4 x 0.6 cm)

(N 23.024)

DAVID KORDANSKY GALLERY



Non-Art

Objects: USA, 1972

book

9 5/8 x 8 5/8 x 1 1/2 inches

(24.4 x 21.9 x 3.8 cm)

(N 22.120)

Artworks (right to left):



Doyle Lane

Weed Pot, c. 1960 - 1978

glazed ceramic

2 1/4 x 2 5/8 x 2 5/8 inches

(5.7 x 6.7 x 6.7 cm)

(DLE 19.029)



Doyle Lane

Weed Pot, c. 1960 - 1978

glazed ceramic

4 3/4 x 4 x 4 inches

(12.1 x 10.2 x 10.2 cm)

(DLE 22.045)



Doyle Lane

Weed Pot, c. 1960 - 1978

glazed ceramic

1 1/2 x 2 3/8 x 2 3/8 inches

(3.8 x 6 x 6 cm)

(DLE 21.014)



Doyle Lane

Weed Pot, c. 1960 - 1978

glazed ceramic

3 1/4 x 3 7/8 x 3 7/8 inches

(8.3 x 9.8 x 9.8 cm)

(DLE 19.014)

**DAVID
KORDANSKY
GALLERY**



Doyle Lane

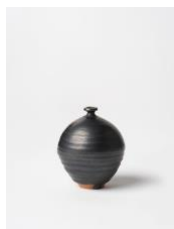
Weed Pot, c. 1960 - 1978

glazed ceramic

2 x 3 1/4 x 3 1/4 inches

(5.1 x 8.3 x 8.3 cm)

(DLE 19.017)



Doyle Lane

Weed Pot, c. 1960 - 1978

glazed ceramic

3 3/4 x 3 x 3 inches

(9.5 x 7.6 x 7.6 cm)

(DLE 23.005)



Doyle Lane

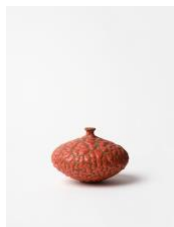
Weed Pot, c. 1960 - 1978

glazed ceramic

2 3/8 x 2 3/8 x 2 3/8 inches

(6 x 6 x 6 cm)

(DLE 22.017)



Doyle Lane

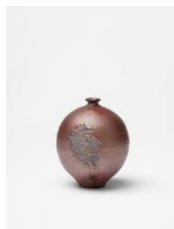
Weed Pot, c. 1960 - 1978

glazed ceramic

2 1/2 x 3 1/2 x 3 1/2 inches

(6.3 x 8.9 x 8.9 cm)

(DLE 22.046)



Doyle Lane

Weed Pot, c. 1960 - 1978

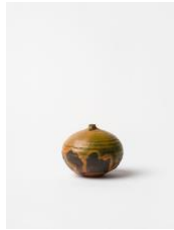
glazed ceramic

4 1/2 x 3 1/4 x 3 1/4 inches

(11.4 x 8.3 x 8.3 cm)

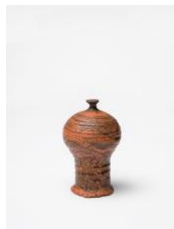
(DLE 20.063)

**DAVID
KORDANSKY
GALLERY**



Doyle Lane

Weed Pot, c. 1960 - 1978
glazed ceramic
2 1/8 x 2 1/2 x 2 1/2 inches
(5.4 x 6.3 x 6.3 cm)
(DLE 22.043)



Doyle Lane

Weed Pot, c. 1960 - 1978
glazed ceramic
4 x 2 1/2 x 2 1/2 inches
(10.2 x 6.4 x 6.4 cm)
(DLE 19.027)



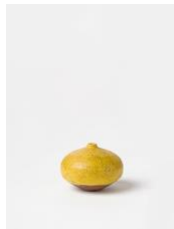
Doyle Lane

Weed Pot, c. 1960 - 1978
glazed ceramic
2 5/8 x 2 5/8 x 2 5/8 inches
(6.7 x 6.7 x 6.7 cm)
(DLE 22.039)



Doyle Lane

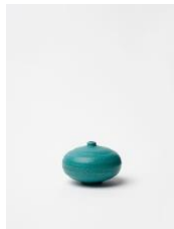
Weed Pot, c. 1960 - 1978
glazed ceramic
2 1/2 x 4 1/2 x 4 1/2 inches
(6.4 x 11.4 x 11.4 cm)
(DLE 20.062)



Doyle Lane

Weed Pot, c. 1960 - 1978
glazed ceramic
1 7/8 x 2 3/8 x 2 3/8 inches
(4.8 x 6 x 6 cm)
(DLE 21.021)

**DAVID
KORDANSKY
GALLERY**



Doyle Lane

Weed Pot, c. 1960 - 1978
glazed ceramic
1 3/4 x 2 3/8 x 2 3/8 inches
(4.4 x 6 x 6 cm)
(DLE 22.038)



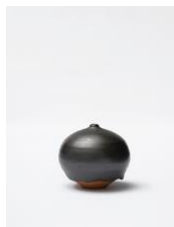
Doyle Lane

Weed Pot, c. 1960 - 1978
glazed ceramic
2 3/4 x 2 1/2 x 2 1/2 inches
(7 x 6.4 x 6.4 cm)
(DLE 20.049)



Doyle Lane

Weed Pot, c. 1960 - 1978
glazed ceramic
1 1/4 x 2 3/4 x 2 3/4 inches
(3.2 x 7 x 7 cm)
(DLE 20.064)



Doyle Lane

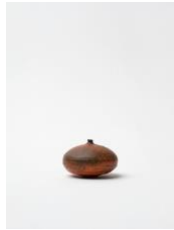
Weed Pot, c. 1960 - 1978
glazed ceramic
2 x 2 1/4 x 2 1/4 inches
(5.1 x 5.7 x 5.7 cm)
(DLE 20.068)



Doyle Lane

Weed Pot, c. 1960 - 1978
glazed ceramic
4 1/4 x 3 1/4 x 3 1/4 inches
(10.8 x 8.3 x 8.3 cm)
(DLE 19.003)

**DAVID
KORDANSKY
GALLERY**



Doyle Lane

Weed Pot, c. 1960 - 1978

glazed ceramic

2 x 3 x 3 inches

(5.1 x 7.6 x 7.6 cm)

(DLE 22.032)



Doyle Lane

Weed Pot, c. 1960 - 1978

glazed ceramic

4 x 3 3/4 x 3 3/4 inches

(10.2 x 9.5 x 9.5 cm)

(DLE 22.005)



Doyle Lane

Weed Pot, c. 1960 - 1978

glazed ceramic

2 7/8 x 2 1/2 x 2 1/2 inches

(7.3 x 6.4 x 6.4 cm)

(DLE 20.041)



Doyle Lane

Weed Pot, c. 1960 - 1978

glazed ceramic

5 1/2 x 6 x 6 inches

(14 x 15.2 x 15.2 cm)

(DLE 23.009)



Doyle Lane

Weed Pot, c. 1960 - 1978

glazed ceramic

2 3/8 x 3 1/2 x 3 1/2 inches

(6 x 8.9 x 8.9 cm)

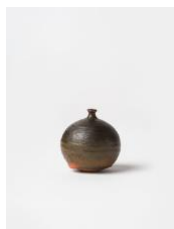
(DLE 20.059)

**DAVID
KORDANSKY
GALLERY**



Doyle Lane

Weed Pot, c. 1960 - 1978
glazed ceramic
2 1/2 x 2 1/2 x 2 1/2 inches
(6.4 x 6.4 x 6.4 cm)
(DLE 15.012)



Doyle Lane

Weed Pot, c. 1960 - 1978
glazed ceramic
2 1/2 x 2 1/2 x 2 1/2 inches
(6.4 x 6.4 x 6.4 cm)
(DLE 15.015)



Doyle Lane

Weed Pot, c. 1960 - 1978
glazed ceramic
3 1/2 x 3 1/8 x 3 1/8 inches
(8.9 x 7.9 x 7.9 cm)
(DLE 22.071)



Doyle Lane

Weed Pot, c. 1960 - 1978
glazed ceramic
2 3/8 x 2 3/4 x 2 3/4 inches
(6 x 7 x 7 cm)
(DLE 22.048)



Doyle Lane

Weed Pot, c. 1960 - 1978
glazed ceramic
2 1/4 x 2 1/4 x 2 1/4 inches
(5.7 x 5.7 x 5.7 cm)
(DLE 22.056)

**DAVID
KORDANSKY
GALLERY**



Doyle Lane

Weed Pot, c. 1960 - 1978
glazed ceramic
4 3/8 x 3 3/4 x 3 3/4 inches
(11.1 x 9.5 x 9.5 cm)
(DLE 20.048)



Doyle Lane

Weed Pot, c. 1960 - 1978
glazed ceramic
1 7/8 x 2 3/4 x 2 3/4 inches
(4.8 x 7 x 7 cm)
(DLE 20.044)



Doyle Lane

Weed Pot, c. 1960 - 1978
glazed ceramic
3 7/8 x 3 1/4 x 3 1/4 inches
(9.8 x 8.3 x 8.3 cm)
(DLE 19.020)



Doyle Lane

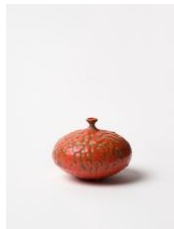
Weed Pot, c. 1960 - 1978
glazed ceramic
4 7/8 x 4 1/4 x 4 1/4 inches
(12.4 x 10.8 x 10.8 cm)
(DLE 22.055)



Doyle Lane

Weed Pot, c. 1960 - 1978
glazed ceramic
2 1/2 x 2 1/2 x 2 1/2 inches
(6.4 x 6.4 x 6.4 cm)
(DLE 20.053)

**DAVID
KORDANSKY
GALLERY**



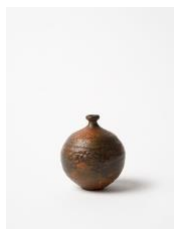
Doyle Lane

Weed Pot, c. 1960 - 1978
glazed ceramic
2 3/4 x 3 1/2 x 3 1/2 inches
(7 x 8.9 x 8.9 cm)
(DLE 22.057)



Doyle Lane

Weed Pot, c. 1960 - 1978
glazed ceramic
6 x 7 3/4 x 7 3/4 inches
(15.2 x 19.7 x 19.7 cm)
(DLE 22.037)



Doyle Lane

Weed Pot, c. 1960 - 1978
glazed ceramic
2 1/2 x 2 1/8 x 2 1/8 inches
(6.3 x 5.4 x 5.4 cm)
(DLE 23.010)



Doyle Lane

Weed Pot, c. 1960 - 1978
glazed ceramic
2 x 2 3/4 x 2 3/4 inches
(5.1 x 7 x 7 cm)
(DLE 20.046)



Doyle Lane

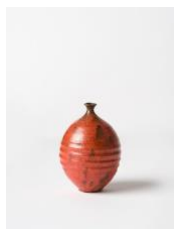
Weed Pot, c. 1960 - 1978
glazed ceramic
4 1/4 x 4 1/4 x 4 1/4 inches
(10.8 x 10.8 x 10.8 cm)
(DLE 19.031)

**DAVID
KORDANSKY
GALLERY**



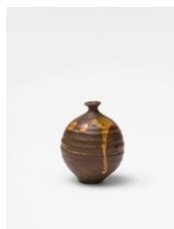
Doyle Lane

Weed Pot, c. 1960 - 1978
glazed ceramic
2 1/2 x 2 1/2 x 2 1/2 inches
(6.3 x 6.3 x 6.3 cm)
(DLE 22.060)



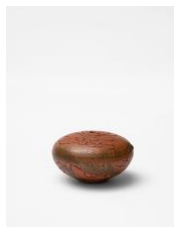
Doyle Lane

Weed Pot, c. 1960 - 1978
glazed ceramic
4 x 2 1/2 x 2 1/2 inches
(10.2 x 6.3 x 6.3 cm)
(DLE 22.026)



Doyle Lane

Weed Pot, c. 1960 - 1978
glazed ceramic
2 7/8 x 2 1/4 x 2 1/4 inches
(7.3 x 5.7 x 5.7 cm)
(DLE 19.030)



Doyle Lane

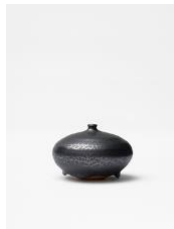
Weed Pot, c. 1960 - 1978
glazed ceramic
1 1/2 x 2 5/8 x 2 5/8 inches
(3.8 x 6.7 x 6.7 cm)
(DLE 19.006)



Doyle Lane

Weed Pot, c. 1960 - 1978
glazed ceramic
4 1/2 x 4 x 4 inches
(11.4 x 10.2 x 10.2 cm)
(DLE 20.073)

**DAVID
KORDANSKY
GALLERY**



Doyle Lane

Weed Pot, c. 1960 - 1978

glazed ceramic

2 x 3 x 3 inches

(5.1 x 7.6 x 7.6 cm)

(DLE 19.015)



Doyle Lane

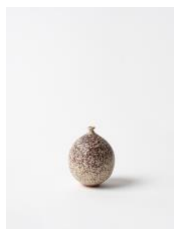
Weed Pot, c. 1960 - 1978

glazed ceramic

4 1/4 x 2 1/8 x 2 1/8 inches

(10.8 x 5.4 x 5.4 cm)

(DLE 22.044)



Doyle Lane

Weed Pot, c. 1960 - 1978

glazed ceramic

3 1/2 x 2 1/2 x 2 1/2 inches

(8.9 x 6.3 x 6.3 cm)

(DLE 22.031)



Doyle Lane

Weed Pot, c. 1960 - 1978

glazed ceramic

5 x 3 7/8 x 3 7/8 inches

(12.7 x 9.8 x 9.8 cm)

(DLE 19.010)



Doyle Lane

Weed Pot, c. 1960 - 1978

glazed ceramic

3 x 3 3/4 x 3 3/4 inches

(7.6 x 9.5 x 9.5 cm)

(DLE 19.012)

**DAVID
KORDANSKY
GALLERY**



Doyle Lane

Weed Pot, c. 1960 - 1978
glazed ceramic
3 5/8 x 3 1/8 x 3 1/8 inches
(9.2 x 7.9 x 7.9 cm)
(DLE 19.039)



Doyle Lane

Weed Pot, c. 1960 - 1978
glazed ceramic
3 1/2 x 3 x 3 inches
(8.9 x 7.6 x 7.6 cm)
(DLE 17.001)



Doyle Lane

Weed Pot, c. 1960 - 1978
glazed ceramic
1 7/8 x 2 1/2 x 2 1/2 inches
(4.8 x 6.4 x 6.4 cm)
(DLE 19.024)



Doyle Lane

Weed Pot, c. 1960 - 1978
glazed ceramic
2 3/8 x 3 x 3 inches
(6 x 7.6 x 7.6 cm)
(DLE 23.011)



Doyle Lane

Weed Pot, c. 1960 - 1978
glazed ceramic
7 3/4 x 6 1/4 x 6 1/4 inches
(19.7 x 15.9 x 15.9 cm)
(DLE 22.027)

**DAVID
KORDANSKY
GALLERY**



Doyle Lane

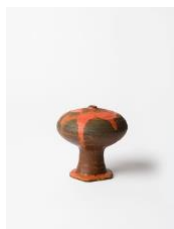
Weed Pot, c. 1960 - 1978

glazed ceramic

2 x 2 3/4 x 2 3/4 inches

(5.1 x 7 x 7 cm)

(DLE 20.055)



Doyle Lane

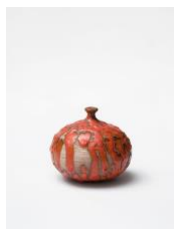
Weed Pot, c. 1960 - 1978

glazed ceramic

3 3/4 x 3 3/4 x 3 3/4 inches

(9.5 x 9.5 x 9.5 cm)

(DLE 23.007)



Doyle Lane

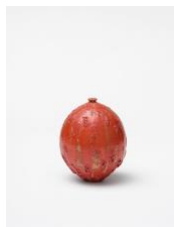
Weed Pot, c. 1960 - 1978

glazed ceramic

2 3/4 x 3 x 3 inches

(7 x 7.6 x 7.6 cm)

(DLE 19.032)



Doyle Lane

Weed Pot, c. 1960 - 1978

glazed ceramic

5 3/8 x 4 1/2 x 4 1/2 inches

(13.7 x 11.4 x 11.4 cm)

(DLE 19.023)



Doyle Lane

Weed Pot, c. 1960 - 1978

glazed ceramic

4 x 3 3/4 x 3 3/4 inches

(10.2 x 9.5 x 9.5 cm)

(DLE 22.041)

**DAVID
KORDANSKY
GALLERY**



Doyle Lane

Weed Pot, c. 1960 - 1978
glazed ceramic
1 5/8 x 2 1/4 x 2 1/4 inches
(4.1 x 5.7 x 5.7 cm)
(DLE 19.028)



Doyle Lane

Weed Pot, c. 1960 - 1978
glazed ceramic
2 3/4 x 2 1/2 x 2 1/2 inches
(7 x 6.4 x 6.4 cm)
(DLE 20.052)



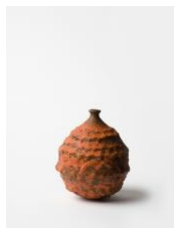
Doyle Lane

Weed Pot, c. 1960 - 1978
glazed ceramic
4 3/4 x 3 3/4 x 3 3/4 inches
(12.1 x 9.5 x 9.5 cm)
(DLE 19.026)



Doyle Lane

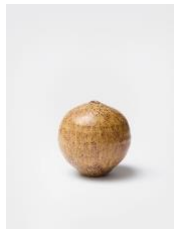
Weed Pot, c. 1960 - 1978
glazed ceramic
2 3/4 x 3 x 3 inches
(7 x 7.6 x 7.6 cm)
(DLE 22.023)



Doyle Lane

Weed Pot, c. 1960 - 1978
glazed ceramic
4 1/2 x 3 1/2 x 3 1/2 inches
(11.4 x 8.9 x 8.9 cm)
(DLE 22.070)

**DAVID
KORDANSKY
GALLERY**



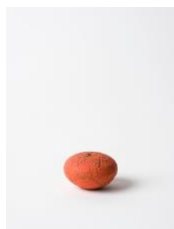
Doyle Lane

Weed Pot, c. 1960 - 1978
glazed ceramic
2 1/2 x 2 1/4 x 2 1/4 inches
(6.4 x 5.7 x 5.7 cm)
(DLE 20.056)



Doyle Lane

Weed Pot, c. 1960 - 1978
glazed ceramic
5 1/8 x 2 x 2 inches
(13 x 5.1 x 5.1 cm)
(DLE 22.030)



Doyle Lane

Weed Pot, c. 1960 - 1978
glazed ceramic
1 1/2 x 2 1/4 x 2 1/4 inches
(3.8 x 5.7 x 5.7 cm)
(DLE 22.014)



Doyle Lane

Weed Pot, c. 1960 - 1978
glazed ceramic
1 3/8 x 2 1/4 x 2 1/4 inches
(3.5 x 5.7 x 5.7 cm)
(DLE 22.011)



Doyle Lane

Weed Pot, c. 1960 - 1978
glazed ceramic
7 3/4 x 5 3/4 x 5 3/4 inches
(19.7 x 14.6 x 14.6 cm)
(DLE 20.061)

**DAVID
KORDANSKY
GALLERY**



Doyle Lane

Weed Pot, c. 1960 - 1978

glazed ceramic

2 1/4 x 2 x 2 inches

(5.7 x 5.1 x 5.1 cm)

(DLE 22.009)



Doyle Lane

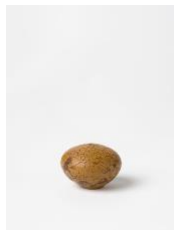
Weed Pot, c. 1960 - 1978

glazed ceramic

2 3/4 x 2 5/8 x 2 5/8 inches

(7 x 6.7 x 6.7 cm)

(DLE 19.040)



Doyle Lane

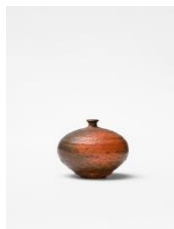
Weed Pot, c. 1960 - 1978

glazed ceramic

1 3/4 x 2 3/8 x 2 3/8 inches

(4.4 x 6 x 6 cm)

(DLE 21.022)



Doyle Lane

Weed Pot, c. 1960 - 1978

glazed ceramic

2 1/2 x 2 1/4 x 2 1/4 inches

(6.4 x 5.7 x 5.7 cm)

(DLE 20.060)



Doyle Lane

Weed Pot, c. 1960 - 1978

glazed ceramic

4 1/4 x 3 1/2 x 3 1/2 inches

(10.8 x 8.9 x 8.9 cm)

(DLE 19.037)

**DAVID
KORDANSKY
GALLERY**



Doyle Lane

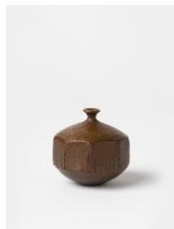
Weed Pot, c. 1960 - 1978

glazed ceramic

2 7/8 x 4 x 4 inches

(7.3 x 10.2 x 10.2 cm)

(DLE 19.038)



Doyle Lane

Weed Pot, c. 1960 - 1978

glazed ceramic

3 x 3 x 3 in

7.6 x 7.6 x 7.6 cm

(DLE 21.011)



Doyle Lane

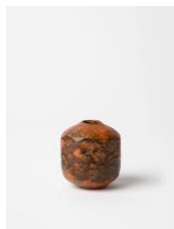
Weed Pot, c. 1960 - 1978

glazed ceramic

1 1/2 x 2 1/4 x 2 1/4 inches

(3.8 x 5.7 x 5.7 cm)

(DLE 19.019)



Doyle Lane

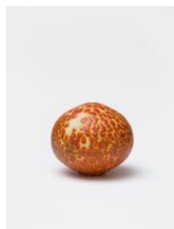
Weed Pot, c. 1960 - 1978

glazed ceramic

2 7/8 x 2 1/2 x 2 1/2 inches

(7.3 x 6.3 x 6.3 cm)

(DLE 23.006)



Doyle Lane

Weed Pot, c. 1960 - 1978

glazed ceramic

3 3/4 x 4 1/4 x 4 1/4 inches

(9.5 x 10.8 x 10.8 cm)

(DLE 15.003)

**DAVID
KORDANSKY
GALLERY**



Doyle Lane

Weed Pot, c. 1960 - 1978

glazed ceramic

2 x 3 x 3 inches

(5.1 x 7.6 x 7.6 cm)

(DLE 22.078)



Doyle Lane

Weed Pot, c. 1960 - 1978

glazed ceramic

4 1/2 x 3 3/4 x 3 3/4 inches

(11.4 x 9.5 x 9.5 cm)

(DLE 19.009)



Doyle Lane

Weed Pot, c. 1960 - 1978

glazed ceramic

4 x 2 1/2 x 2 1/2 inches

(10.2 x 6.4 x 6.4 cm)

(DLE 15.006)



Doyle Lane

Weed Pot, c. 1960 - 1978

glazed ceramic

5 x 4 1/4 x 4 1/4 inches

(12.7 x 10.8 x 10.8 cm)

(DLE 22.077)



Doyle Lane

Weed Pot, c. 1960 - 1978

glazed ceramic

2 x 2 3/4 x 2 3/4 inches

(5.1 x 7 x 7 cm)

(DLE 19.033)

**DAVID
KORDANSKY
GALLERY**



Doyle Lane

Weed Pot, c. 1960 - 1978
glazed ceramic
2 3/4 x 2 3/8 x 2 3/8 inches
(7 x 6 x 6 cm)
(DLE 20.043)



Doyle Lane

Weed Pot, c. 1960 - 1978
glazed ceramic
4 x 3 1/2 x 3 1/2 inches
(10.2 x 8.9 x 8.9 cm)
(DLE 23.008)



Doyle Lane

Weed Pot, c. 1960 - 1978
glazed ceramic
1 3/4 x 3 x 3 inches
(4.4 x 7.6 x 7.6 cm)
(DLE 22.058)



Doyle Lane

Weed Pot, c. 1960 - 1978
glazed ceramic
2 1/2 x 3 1/4 x 3 1/4 inches
(6.4 x 8.3 x 8.3 cm)
(DLE 19.004)



Doyle Lane

Weed Pot, c. 1960 - 1978
glazed ceramic
2 x 3 x 3 inches
(5.1 x 7.6 x 7.6 cm)
(DLE 22.069)

**DAVID
KORDANSKY
GALLERY**



Doyle Lane

Weed Pot, c. 1960 - 1978

glazed ceramic

1 7/8 x 3 x 3 inches

(4.8 x 7.6 x 7.6 cm)

(DLE 22.008)



Doyle Lane

Weed Pot, c. 1960 - 1978

glazed ceramic

3 x 3 x 3 inches

(7.6 x 7.6 x 7.6 cm)

(DLE 20.140)



Doyle Lane

Weed Pot, c. 1960 - 1978

glazed ceramic

4 3/8 x 3 1/4 x 3 1/4 inches

(11.1 x 8.3 x 8.3 cm)

(DLE 19.007)



Doyle Lane

Weed Pot, c. 1960 - 1978

glazed ceramic

3 x 2 x 2 inches

(7.6 x 5.1 x 5.1 cm)

(DLE 21.001)



Doyle Lane

Weed Pot, c. 1960 - 1978

glazed ceramic

2 1/4 x 2 1/2 x 2 1/2 inches

(5.7 x 6.3 x 6.3 cm)

(DLE 22.010)

**DAVID
KORDANSKY
GALLERY**



Doyle Lane

Weed Pot, c. 1960 - 1978

glazed ceramic

3 1/2 x 3 x 3 inches

(8.9 x 7.6 x 7.6 cm)

(DLE 19.001)



Doyle Lane

Weed Pot, c. 1960 - 1978

glazed ceramic

8 3/4 x 5 3/4 x 5 3/4 inches

(22.2 x 14.6 x 14.6 cm)

(DLE 19.021)



Doyle Lane

Weed Pot, c. 1960 - 1978

glazed ceramic

1 3/4 x 2 3/4 x 2 3/4 inches

(4.4 x 7 x 7 cm)

(DLE 20.072)



Doyle Lane

Weed Pot, c. 1960 - 1978

glazed ceramic

2 1/4 x 3 1/4 x 3 1/4 inches

(5.7 x 8.3 x 8.3 cm)

(DLE 19.036)