

David Altmejd
The Enlightenment of the Witch
May 15 – July 2, 2021



David Altmejd

Matter, 2021

expandable foam, epoxy clay, resin,
wood, acrylic paint, and steel
29 1/2 x 10 1/8 x 12 1/2 inches
(74.9 x 25.7 x 31.8 cm)
(Inv# DAL 21.006)



David Altmejd

Ghost Realization, 2021

expandable foam, epoxy clay, epoxy
gel, resin, wood, steel, acrylic paint,
and quartz
30 x 23 1/2 x 23 1/2 inches
(76.2 x 59.7 x 59.7 cm)
(Inv# DAL 21.003)



David Altmejd

C.C. (Emerging), 2021

expandable foam, epoxy clay, acrylic
paint, glitter, and quartz
7 x 8 1/4 x 9 3/4 inches
(17.8 x 21 x 24.8 cm)
(Inv# DAL 21.008)



David Altmejd

C.C. (Standing), 2021

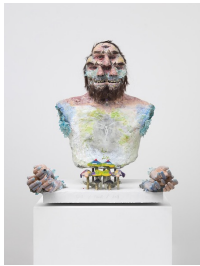
expandable foam, epoxy clay, quartz,
resin, acrylic paint, glitter, wood, and
steel
23 3/4 x 8 1/2 x 8 1/2 inches
(60.3 x 21.6 x 21.6 cm)
(Inv# DAL 21.009)



David Altmejd

Splitting Smurf, 2021

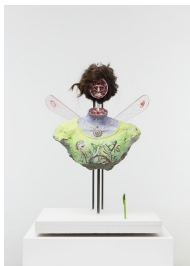
expandable foam, epoxy clay, epoxy gel, resin, wood, steel, acrylic paint, quartz, glass rhinestones, and pencil
27 3/4 x 23 1/2 x 24 inches
(70.5 x 59.7 x 61 cm)
(Inv# DAL 21.005)



David Altmejd

The Troll, 2021

expandable foam, epoxy clay, epoxy gel, resin, wood, steel, hair, acrylic paint, quartz, glass eyes, pencil, Plexiglas, thread, metal wire, glass rhinestones, and glitter
35 x 30 3/4 x 28 1/4 inches
(88.9 x 78.1 x 71.8 cm)
(Inv# DAL 21.004)



David Altmejd

Smoking with Oneself, 2021

expandable foam, epoxy clay, epoxy gel, resin, wood, steel, hair, acrylic paint, quartz, mechanical pencil, pencil, Plexiglas, paper, thread, metal wire, and glass rhinestones
36 x 23 1/2 x 25 1/4 inches
(91.4 x 59.7 x 64.1 cm)
(Inv# DAL 21.002)



David Altmejd

The Unicorn, 2021

expandable foam, epoxy clay, epoxy gel, resin, wood, steel, hair, acrylic paint, quartz, glass eyes, pencil, Plexiglas, thread, metal wire, and glass rhinestones
55 x 26 x 24 inches
(139.7 x 66 x 61 cm)
(Inv# DAL 21.001)



David Altmejd

C.C. (Rising), 2021

expandable foam, epoxy clay, acrylic paint, glitter, quartz, and wood
12 x 8 1/2 x 7 1/2 inches
(30.5 x 21.6 x 19.1 cm)
(Inv# DAL 21.007)



David Altmejd

The Enlightenment of the Witch, 2021
expandable foam, epoxy clay, epoxy gel, resin, wood, steel, acrylic paint, quartz, glass eyes, glass rhinestones, glitter, hair, wire, thread, pencil, marker, plastic, screws, and Plexiglas
56 x 45 x 30 inches
(142.2 x 114.3 x 76.2 cm)
(Inv# DAL 21.010)